



treasury

Department:
Treasury
PROVINCE OF KWAZULU-NATAL

IMANUWALI

EMISELWE

NGOKWESAHLUKO SE-14

**SOMTHETHO WOKUKHUTHAZA UKUFIKELELA KULWAZI,
2000**

(UMTHETHO ONGUNOMBOLO WESI-2 KA-2000)

**ISEBE LEZEMALI LEPHONDO LAKWAZULU-NATALA,
2010**

Iphunyezwe yiNtloko yeSebe

ULUHLU LWEZIQULATHO

	Ingabula-zigcawu yeNtloko yeSebe	3
1	Intshayelelo neenkcazelo	4-5
2	Imvelaphi yeSebe leZemali lePhondo laseKZN	5-6
3	Iinkcukacha zeSebe ngokumisela kweCandelo le-14 loMthetho	6-7
4	Iinkcukacha zoqhagamshelwano	7-8
5	Isikhokelo seCandelo le-10 sendlela yokusebenzisa uMthetho [iCandelo le-14 (1) (c)]	8
6	Ukufikelela kwiingxelo ezigcinwe liSebe leZemali lePhondo laKwaZulu-Natala [iCandelo le-4 (1)(d)]	8-9
7	Iingxelo ezigcinwe liSebe leZemali lePhondo laseKZN	9-14
8	Isicwangciso esivumela ukuthabatha inxaxheba koluntu kuveliso lomgaqo-nkqubo kwakunye nasekutyenzisweni kwamandla eSebe leZemali laseKZN [iCandelo le-14(1)(g)]	14
9	Uncedo olufumanekayo xa amagatya alo Mthetho engathotyelwa [iCandelo le-14(1)(h)]	14
10	Ezinye iinkcukacha ngokuyalela koMthetho [iCandelo le-14(4)(a) kunye neCandelo le-14(4)(b)]	14
11	Ukuhlaziywa kwemanuwali [iCandelo le-14(2)]	15
12	Ukufumaneka kwemanuwali [iCandelo le-14(3)]	15
13	Isicelo sokuqulunqa imanuwali enye esiya kuMphathiswa wezoBulungisa noPhuhliso loMgaqo-siseko	15
14	Ukukhululwa nguMphathiswa wezoBulungisa noPhuhliso loMgaqo-siseko kulo naliphi na igatya leli candelo kwisithuba esiqingqiweyo [iCandelo le-14(5)]	15
15	Ukufumaneka kwale manuwali njengoko kubalulwe kwicandelo le-14(3) loMthetho	15
16	Iingxelo ezinokucelwa	15
17	Inkqubo yokufaka isicelo	16
18	Iinkonzo ezifumanekayo kumalungu oluntu njengoko kucamngcwe kwicandelo le-14(1)(f) loMthetho	16-18
19	Imirhumo njengoko kuyalelwe phantsi kweSahluko se-11 seSaziso se-187 esikwiGazethi kaRhulumente yomhla we-15 kweyoMdumba ka-2002	18-20
20	Iifomu Ifomu A: Isicelo sokufikelela kwiingxelo Ifomu B: Isaziso sesiBheni sangaPhakathi	21-29
21	Ishedyuli: Ukuthunywa kweSekela leGosa loLwazi liGosa loLwazi	30-41

INGABULA-ZIGCAWU YENTLOKO YESEBE

UMgaqo-siseko weRiphabliki yoMzantsi Afrika unconywa njengelinye lamaxwebhu anenkqubela enkulu kwihlabathi.

Elinye lamalungelo akuMgaqo-siseko wethu lilungelo lokufikelela kulwazi kwaye eli lungelo liphuhliswa kwiCandelo lama-32 loMthetho oKhuthaza ukuFikelela kuLwazi wesi-2 ka-2000.

ISebe leZemali lePhondo laKwaZulu-Natala liyayibona imfuneko yokukhuthaza imithetho-siseko yokungafihlisi nokwenza izinto ekuhleni. Ukulandelwa kwale mithetho-siseko akwenzi igalelo elikhulu ekucimeni imbali yethu ezele ziimfihlo kuphela, koko kukwaphinda kuphucule ulawulo olunobulungisa kunye nothatho-nxaxheba olufanelekileyo loluntu ngokubanzi kwiinkqubo zentando yesininzi.

ISebe leZemali lePhondo laKwaZulu-Natala liqinisekisa inkxaso yalo yale mithetho-siseko ngokuthi lipapashe le manuwali yalo ilapha ngezantsi.

Mnu.L.S. Magagula

INTloko yeSebe leZemali kwiPhondo laKwaZulu-Natala

IMANUWALI

EMISELWE NGOKOMTHETHO WOKUKHUTHAZA UKUFIKELELA KULWAZI KA-2000

Le manuwali ishicilelwe liSebe leZemali lePhondo laKwaZulu-Natala ngokumisela kwecandelo le-14 loMthetho oKhuthaza uKufikelela kuLwazi. Lo Mthetho unika intsingiselo kumagatya ecandelo lama-32 loMgaqo-siseko elibalula ilungelo lokufikelela kulwazi olugcinwe nguRhulumente kunye nakulwazi olugcinwe ngomnye umntu olufunekayo ukuze kusetyenziswe okanye kukhuselwe naliphi na ilungelo. Ukuqkwa kwalo naluphi na ulwazi kule Manuwali ukongeza kolo lufunwa ngokukodwa ngokumisela kwecandelo le-14 loMthetho akuniki lungelo libophelelayo okanye igunya elilodwa lokulufumana olo lwazi koko ulwazi lufunyanwa ngokumisela koMthetho.

1. linkcazelo

Naliphi na igama okanye intetho enikwe intsingiselo kuMthetho wokuKhuthaza ukuFikelela kuLwazi ka-2000 (uMthetho onguNombolo wesi-2 ka-2000) kufuneka ibe nalo ntsingiselo kule manuwali ngaphandle kokuba ayifanelekanga nangaphandle kokuba umxholo uxela nto yimbi –

“**uMthetho**” kuxelwa uMthetho oKhuthaza ukuFikelela kuLwazi, 2000 (uMthetho onguNombolo wesi-2 ka-2000);

“**iSekela leGosa loLwazi**” kuxelwa uManejala oMkhulu kwiiNkonzo zoMthetho zeSebe;

“**iGosa loLwazi**” kuxelwa iNtloko yeSebe leZemali lePhondo laKwaZulu-Natala;

“**iManuwali**” kuxelwa le Manuwali equlunqwe ngokumisela kwecandelo le-14 loMthetho;

“**iSebe leZimali**” kuxelwa iSebe leZemali lePhondo laKwaZulu-Natala;

“**umceli weenkukacha zobuqu**” kuxelwa umceli ofuna ukufikelela kwingxelo equlethe iinkukacha zomntu buqu;

“**abasebenzi**” kuxelwa nabani na osebenza okanye onika iinkonzo kwiSebe okanye egameni leSebe leZemali lePhondo laKwaZulu-Natala nofumana okanye onelungelo lokufumana nawuphi na umvuzo kuquka bonke abasebenzi abasisigxina, abangxungxileyo nabasebenzi bethutyana kuquka nabasebenzi abaqeshwe ngekontraka;

“**iLungu lesiGqeba sePhondo**” kuxelwa uMphathiswa weZemali wePhondo laKwaZulu-Natala;

“**iPFMA**” kuxelwa uMthetho woLawulo lweZimali zikaRhulumente woku-1 ka-1999;

“**ingxelo**” kuxelwa naziphi na iinkukacha ezishicilelweyo, nokuba zikuyiphi na imo okanye indlela ezigcinwe okanye eziphantsi kolawulo lweSebe leZemali lePhondo

laKwaZulu-Natala, nokuba zenziwe liSebe leZemali lePhondo laKwaZulu-Natala okanye azenziwanga lilo;

“**igunya elifanelekileyo**” kuxelwa umntu owonyulwe yiNtloko yeSebe ngembalelwano;

“**isicelo**” kuxelwa isicelo sokufikelela kwingxelo yeSebe leZemali lePhondo laKwaZulu-Natala;

“**umceli**” kuxelwa nabani na (ingengawo amaziko athile karhulumente okanye igosa elithile) ofaka isicelo sokufikelela kwingxelo yeSebe leZemali lePhondo laKwaZulu-Natala kwaye uquka nabani na osebenza egameni laloo mntu okanye egameni lomceli;

“**ISAHRC**” kuxelwa iKhomishini yamaLungelo oLuntu eMzantsi Afrika.

(2) Amagama anale ntsingiselo, ngaphandle kwaxa kukho injongo ecacileyo yokuchasana nayo-

- (a) isinye siquka isininzi nesininzi siquka isinye;
- (b) isini esithile siquka nesinye isini; kwaye
- (c) abantu bendalo baquka nabantu basemthethweni.

1. Imvelaphi yeSebe leZemali lePhondo laKwaZulu-Natala

IMISEBENZI ENGUNDOQO YESEBE

ISebe leZemali kwiPhondo laseKZN lasungulwa ngokweCandelo le-17 loMthetho woLawulo lweZimali zikaRhulumente kwaye eyona misebenzi yalo engundoqo yile ilandelayo:

- Ukuhlenganisa imali karhulumente wephondo
- Ukwabela amasebe karhulumente ephondo imali
- Ukulungiselela uhlahlo-lwabiwo mali lonyaka nolwenkqubo-sikhokelo yenkcitho yexesha eliphakathi (iMTEF)
- Ulawulo lwemali yephondo ngoku kulandelayo:-
 1. Ukongamela uhlahlo-lwabiwo mali
 2. Uphicotho- zincwadi lwangaphakathi
 3. Ucwangciso-mali
 4. Ukugcina iinkqubo zemali; kwakunye
- Nokunika iingcebiso kwimigaqo-nkqubo neenkqubo zokufumana abaniki beenkonzo kumacandelo orhulumente bephondo noomasipala kuquka namaziko karhulumente aseKZN.

UMBONO

Umbono weSebe ngulo: *Ukuba liziko eliyimbalasane kulawulo lwezimali kweli lizwe.*

UMSEBENZI

Ukuqinisekisa ukwabiwa kwezixhobo zephondo laKwaZulu-Natala ngokulinganayo, ukucalula nokongamela ingeniso kunye nenkcitho karhulumente (owephondo noomasipala kwakunye namaziko karhulumente) kwanokumilisela ulawulo lwezimali olunengqiqo kunye nolawulo olunobulungisa.

Ngoncedo lophando-nzulu oluqiqileyo lomgaqo-nkqubo karhulumente iSebe leZemali lePhondo liza kufaka igxalaba ekuzalisekiseni kweenqobo eziphambili zomgaqo-nkqubo karhulumente ngokuqinisekisa ukujolisa kungenelelo lukarhulumente kuqoqosho olufanelekileyo, oluzinzileyo noluxhobisa abantu.

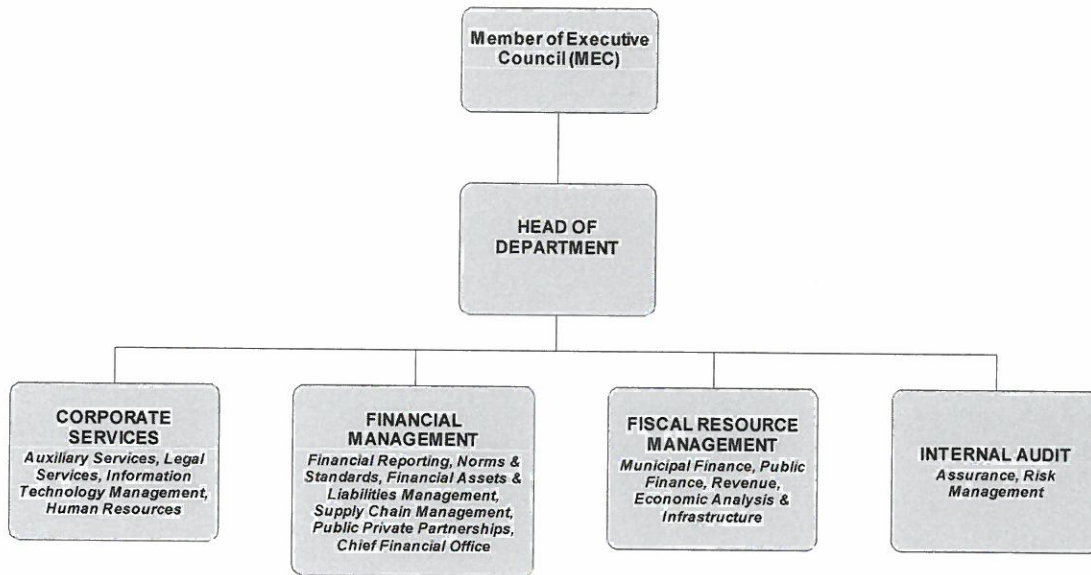
IINJONGO EZICWANGCISIWEYO

Iinjongo ezicwangcisiweyo zeSebe zezi zilandelayo:-

- Ukukhuthaza ulawulo oluqiqileyo lwezimali kunye nolawulo olunobulungisa.
 - Ukugxininisa kanobom ukulwa nendlala nokuvula amathuba emisebenzi ngokubambisana noluntu ngokuhlenganisa nokuxhasa ngemali amashishini kunye nokujolisa ekufumaneni abaniki beenkonzo ngokufanelekileyo;
 - Ukunika ingqwalasela ekuphuculeni inkqubo exandileyo yokuphuhlisa abantu abamnyama kwezoqoqosho (iBBBEE) ngemigaqo-nkqubo yolawulo lwecandelo lokufumana abaniki beenkonzo esebenzayo;
 - Ukumilisela umgaqo-nkqubo obusiphula neengcambu ubuqhophololo norhwaphilizo;
 - Ukuqinisekisa ulawulo olululo lwezimali nokuphelisa inkcitho engaphezulu kwesabelo semali kwanokunciphisa imali eyintsalela;
 - Ukujolisa ukuxhobisa kukarhulumente kunikezelo lweenkonzo;
 - Kunye nokukhuthaza ulawulo lwemali olunengqiqo kwanokuphucula iphondo ukuze libe nemali yokuhlawula amatyala.
- (3) ISebe leZemali lePhondo laKwaZulu-Natala liyalixhasa ilungelo lokufikelela kulwazi kwaye liyazibophelela ekunikeni nawuphi na umceli iingxelo ngokungqinelana namagatya oMthetho.

2. Iinkcukacha ngokumisela kwecandelo le-14 loMthetho

3.1. Ubume beSebe leZemali lePhondo laKwaZulu-Natala:



Intloko yezopolitiko yeSebe leZemali lePhondo laKwaZulu-Natala nguMphathiswa weZemali kwaye intloko yolawulo (iGosa elinika ingxelo) yiNtloko yeSebe.

- Iofisi yoMphathiswa wePhondo
- Iofisi yeNtloko yeSebe
- Iinkonzo zemcimbi yabasebenzi
- Uphicotho-zincwadi lwangaphakathi
- Ulawulo lwezixhobo eziyimali
- ISebe loLawulo lweZimali

4. Iinkcukacha zoqhagamshelwano

Iinkcukacha zoqhagamshelwano ngokumisela kweCandelo le-14 (1)(b) loMthetho.

IGOSA LOLWAZI	IDILESI
<p>Mnu. Simiso Leslie Magagula</p> <p>iNtloko yeSebe</p>	<p>Idilesi ye-imeyili: smiso.magagula@kzntreasury.gov.za Umnxeba: (033) 897 4307 Ifeksi: (033) 342 2486 Idilesi yesitalato: 8th floor 145 Chief Albert Luthuli Street Pietermaritzburg 3201</p> <p>Idilesi yeposi:</p>

	P.O. Box 3613 Pietermaritzburg 3201
ISEKELA LEGOSA LOLWAZI	IDILESI
Mnu. Ndumiso Nkomo Umanejala omkhulu kwiiNkonzo zoMthetho	Idilesi ye-imeyili: Ndumiso.nkomo@kzntreasury.gov.za Umnxeba: (033) 897 4544 Ifeksi: (033) 897 4594 Idilesi yesitalato: 3 rd floor 145 Chief Albert Luthuli Street Pietermaritzburg 3201 Idilesi yeposi: P.O. Box 3613 Pietermaritzburg 3201

5. Indlela yokufikelela kwiSikhokelo njengoko kuchazwe kwicandelo le-10 nele-14(1)(c) loMthetho

- 5.1. ISikhokelo sokusebenzisa uMthetho ngokwecandelo le-14 (1) (c) loMthetho siyafumaneka kwaSAHRC. Nceda uthumele nayiphi na imibuzo onayo kule dilesi:

The South African Human Rights Commission: PAIA Unit
The Research and Documentation Department
Private Bag 2700
HOUGHTON
2051
Umnxeba: (011) 484 8300
Ifeksi: (011) 484 0582
Iwebsite: www.sahrc.org.za
I-imeyili: paia@sahrc.org.za

Esi sikhokelo siyafumaneka kwakhona nakwiSebe leZemali. Nceda uthumele nayiphi na imibuzo onayo kwiSekela leGosa loLwazi kule dilesi ingasentla.

6. Ukufikelela kwiingxelo ezigcinwe liSebe leZemali lePhondo laseKZN ngokumisela kweCandelo le-15 loMthetho

- 6.1 NgokweCandelo le-15 loMthetho iSebe leZemali lePhondo laKwaZulu-Natala linala macandelo alandelayo eengxelo afumanekayo nangafunisi ukuba umntu de afake isicelo sokufikelela kuzo ngokumisela koMthetho (ukubhengeza ngokuzithandela):-

- (a) lincwadi ezithunyelwa kubantu abathile;
- (b) lingxelo zonyaka;
- (c) Izicwangciso zokusebenza zonyaka;
- (d) Izicwangciso zokuceba ukuphucula ukusebenza kweSebe;

- (e) Amaxwebhu anolwazi jikelele
- (f) IMithetho yasePalamente;
- (g) Imimiselo;
- (h) Amanqaku oqeqesho;
- (i) Imigaqo-nkqubo;
- (j) lincwadana;
- (k) liphosta;
- (l) Amaphetshana aqulethe ulwazi.
- (m) Uhlahlo-lwabiwo mali loomasipala;
- (n) Izicwangciso ezimanyeneyo zophuhliso loomasipala;
- (o) Iingxelo zoomasipala zenyanga nezekota.
- (p) Iintetho ezingohlahlo-lwabiwo mali lwePhondo

7. Iingxelo ezigcinwe liSebe leZemali lePhondo laseKZN ezinokuthi zicelwe [icandelo le-14(1)(d)]

- 7.1. Iinkcukacha zokongamela ukufikelela kwiingxelo ezigcinwe liSebe leZemali lePhondo [icandelo le-14(1) (d)].

Icandelo	Iingxelo
I-OFFISI YELUNGU LESIGQEBA (uMphathiswa wePhondo)	Imbalelwano yeKhabhinethi, iingcebiso nezigqibo Amaphulo kunye neenkqubo zonxibelelwano Izibhengezo zoonondaba Iingxelo zokongamela amajelo eendaba Imiboniso yohlahlo-lwabiwo mali Ukuthuma
I-OFFISI YENTLOKO YESEBE	Amaxwebhu obungqina beentlanganiso zeKhabhinethi Imbalelwano yeKhabhinethi Amaxwebhu ezivumelwano Iingxelo Ukuthuma

	Amagalelo afakwe kwiingxelo zonyaka Imbalelwano ngokubanzi
IINKONZO ZEQUMRHU IINKONZO EZIXHASAYO	lingxelo zoLawulo lweZithuthi lingxelo zoLawulo lweZixhobo lingxelo zenkxaso yase-ofisini Umgaqo-nkqubo woLawulo lweeNgxelo kunye neengxelo Izivumelwano lingxelo zeenkonzoz zamathala eencwadi nolwazi kunye neengxelo
ULAWULO LOBUCHULE BEEKHOMPYUTHA	Ingxelo yeenkqubo zoshishino noomatshini base- ofisini Izicwangciso zobuchule beekhomyutha lingxelo zesiCwangciso sokuQhubeka koShishino lingxelo zoLawulo lokuQukethwe ziiKhomyutha Izivumelwano zokusebenzisana neArhente kaRhulumente yobuChule beeKhomyutha Izivumelwano lingxelo zolawulo lwe <i>Website</i>
IINKONZO ZOMTHETHO	Izivumelwano zomthetho Iziqinisekiso zeSebe leZemali lingxelo zomangalelwano Izimvo zomthetho Imithetho eyilwayo Imithetho IMimiselo
ULAWULO LWEENKONZO ZABASEBENZI	IziCwangciso zoLawulo lweMicimbi yabasebenzi Imigaqo-nkqubo yoLawulo lweMicimbi yabasebenzi Imigaqo-nkqubo yoPhuhliso lweMicimbi yabasebenzi lingxelo zabasebenzi lingxelo zoLawulo loKusebenza lingxelo zoluleko Izivumelwano zeMiba yoNxulumano nabasebenzi Izikhokelo zokufuna amaxabiso ezikhundla Iagenda nemizuzu yeqela elichophela iimvavanyo zomsebenzi Ukuvunywa kwamanqanaba ezikhundla Izikhokelo zeenkcazelo zemisebenzi Iinkqubo-sikhokelo zeenkcazelo zemisebenzi.

<p>ULAWULO LWEZEMALI</p>	<p>Imibuzo yoMphicothi-zincwadi Imiba yohlahlo-lwabiwo mali Ulawulo lwangaphakathi Imigaqo-nkqubo kunye neenkqubo Ukunika ingxelo ngenyanga Imiba yeomiti ejongene nenkcitho karhulumente (iSCOPA) Iingxelo ezibonisa ukuthotyelwa kwenkqubo yokufumana iinkonzo Iingxelo zoqeqesho zecandelo lolawulo lokufumana iinkonzo neethenda Ubume beekomiti zokubhida Amanqaku oqeqesho ecandelo elilawula ukunikwa kweenkonzo neethenda Izivumelwano zentsebenziswano yoshishino lwabucala kunye norhulumente Iingxelo zoMphicothi-zincwadi Jikelele Iingxelo zemali zonyaka ezimanyiweyo Iingxelo zemali zonyaka zeSebe nezomasipala Iingxelo zolawulo lwezinto elinazo iSebe namatyala alo</p>
<p>ULAWULO LWEZIXHOBO ZEMALI</p>	<p>Ulwabiwo-mali lwePhondo Isishwankathelo seNkcitho yeNgeniso yePhondo Uthelekelelo lweNkcitho yeNgeniso yePhondo Ulungelelwaniso lolwabiwo-mali Iingxelo zeKomiti yeNkcitho yeXesha eliPhakathi Imbalelwano ethunyelwa kwiindawo ezininzi zohlahlo-lwabiwo-mali Iingxelo zeQumrhu loHlahlo-lwabiwo mali Iingxelo zeNgxowa-mali yoHlumo Iingxelo zoHlahlo-lwabiwo mali Iintetho zoHlahlo-lwabiwo mali Imbalelwano yeKhabhinethi enxulumene noHlahlo-lwabiwo mali Iingxelo zamaqonga amagosa aphezulu ezemali oomasipala</p>

	<p>lintlanganiso zeenkqubo zesicwangciso esimanyeneyo sophuhliso lingxelo zonyaka zezimali zoomasipala Ingxelo yoomasipala yokungena enyakeni Ukusebenza kohlahlo-lwabiwo mali loomasipala Inkqubo yoPhuhliso noPhuculo lwamaSeko okusebenza lingxelo zophando-nzulu lwezoqoqosho</p>
<p>UPHICOTHO -ZINCWADI LWANGAPHAKATHI</p>	<p>lingxelo zoPhicotho-zincwadi Jikelele lingxelo zophicotho-zincwadi olukhethekileyo lingxelo zophicotho-zincwadi lweinshurensi lingxelo zeKomiti yePhondo yolawulo loBungozi noPhicotho-zincwadi lingxelo zendibano yokuncazelana ngolwazi yolawulo lobungozi lingxelo zophando olukhethekileyo Izivumelwano ngokubanzi</p>

8. Isicwangciso esivumela ukuthabatha inxaxheba koluntu kuveliso lomgaqo-nkqubo kwakunye nasekutyenzisweni kwamandla eSebe leZemali laseKZN [iCandelo le-14(1)(g)]

ISebe leZemali laseKZN liyinxalenye yesigqeba sikaRhulumente wePhondo laKwaZulu-Natala. Ayikho indlela engqamene ngqo nothatho-nxaxheba loluntu kuveliso lomgaqo-nkqubo kodwa amalungu oluntu anganalo ifuthe elithile kuveliso lomgaqo-nkqubo ngokwenza oku kulandelayo –

- (a) Ukuthabatha inxaxheba kulonyulo lwephondo;
- (b) Ukunxibelelana nabameli babo ababonyulileyo;
- (c) Ukuzibandakanya kwindlu yowiso-mthetho kunye nakwezinye iinkqubo zothatho-nxaxheba zoluntu kwiNdlu yoWiso-mthetho yePhondo laKwaZulu-Natala (www.kznlegislature.gov.za) nakwiiKomiti zayo; kunye

(d) Nokuya kwiindibano zeNdlu yoWiso-mthetho yaKwaZulu-Natala.

9. Uncedo olufumanekayo xa amagatya oMthetho engathotyelwa [icandelo le-14(1)(h)]

Umceli ongonelisekanga unako ukubhena kuMphathiswa weZemali wePhondo. Emva koko angagqithela kwiiNkundla eziPhakamileyo zoMzantsi Afrika.

10. Ezinye iinkcukacha njengoko uyalela uMthetho [iCandelo le-14(1)(i)]

Okwangoku akukabikho zinkcukacha ezivela kuMphathiswa ezinokubhalwa apha njengokumisela kwecandelo lama-92.

11. Ukuhlaziywa kwemanuwali [iCandelo le-14(2)]

Luxanduva lweSebe leZemali laseKZN ukuhlaziya le manuwali kwisithuba esingekho ngaphezulu konyaka.

12. Ukufumaneka kwemanuwali [iCandelo le-14(3)]

Le manuwali ifumaneka ngeelwimi ezintathu ezisemthethweni: isiNgesi, isiZulu unye nesiXhosa. Imanuwali yeSebe leZemali laseKZN iyafumaneka kwiwebsite kwakunye nakwii-ofisi zamaziko karhulumente, kumasebe karhulumente ephondo nakazwelonke, kwimibutho yoshishino nakwimibutho yabahlali.

13. Isicelo esiya kuMphathiswa sokuqulunqa imanuwali enye [iCandelo le-14(4)(a) kunye neCandelo le-14(4)(b)]

Le manuwali iqulunqelwe ngokukodwa iSebe leZemali laseKZN.

14. Ukukhululwa nguMphathiswa kulo naliphi na igatya leli candelo kwisithuba esiqingqiweyo [iCandelo le-14(5)]

ISebe leZemali laseKZN alikhululwa kulo naliphi na igatya leli candela.

1. Okwangoku azikho ezinye iinkcukacha ezimiselwe nguMphathiswa wezoBulungisa noPhuhliso loMgaqo-siseko.

15. Ukufumaneka kwale Manuwali njengoko kubalulwe kwicandelo le-14(3) loMthetho

Ikopi yale Manuwali ifumaneka –

(a) kwiwebsite esesikweni yeSebe leZemali laKwaZulu-Natala ethi

<http://www.kzntreasury.gov.za>

(b) ngokuthi uthumelele iGosa loLwazi isicelo sokufumana ikopi nge-imeyili, iposi okanye ngefeksi;

(c) kuzo zonke iindawo zomthetho njengoko kuchazwe kwicandelo le-6 loMthetho wokuGcinisa izinto ezinxulumene noMthetho, 1997 (uMthetho ongunombolo wama-54

ka-1997), ukuze ibonwe ngabantu kwii-ofisi zethu njengoko kuchaziwe kumhlathi wesi-4 wale manuwali;

(d) kuyo nayiphi na iofisi yeSAHRC (jonga ku-<http://www.sahrc.org.za> ukuze ufumane iinkcukacha zeedilesi);

(e) nakwiCandelo loshicilelo likaRhulumente (jonga ku-http://www.home-affairs.gov.za/gov_printing_works.asp ukuze ufumane iinkcukacha zedilesi yabo).

(f) Akusayi kuhlawuliswa ngokujonga ikopi yale manuwali kwiwebsite ye**Sebe leZemali lePhondo laKwaZulu-Natala okanye kwiifisi zethu.**

(g) ISebe leZimali laKwaZulu-Natala liligcinile ilungelo lalo lokuhlawulisa umrhumo weekopi zale manuwali ngokungqinelana nemirhumo ehlawuliswa kwiingxelo. Imirhumo ehlawuliswayo ibalulwe **kumhlathi we-15** wale Manuwali.

16. Iingxelo ezinokuthi zicelwe

- (1) umceli unako ukufaka isicelo salo naluphi na ulwazi olushicilelweyo nokuba lukuyiphi na imo okanye lungayiphi na indlela olugcinwe okanye oluphantsi kolawulo lweSebe leZemali lePhondo laseKZN, nokokuba lwenziwa liSebe leZemali lePhondo laseKZN kusini na okanye alwenziwanga lilo (jonga i**Fomu A**).
- (2) ISebe leZemali lePhondo laseKZN lizibophelele ekwenzeni izinto ngokungafihlisiyo nangokutyhilekileyo. Ngoko ke xa isicelo sikwicandelo leengxelo ezicelwayo ukuze ufikelele kuzo loo nto ayixeli ukuba iSebe leZemali laseKzn linyanzelekile ukuba likunike loo ngxelo uyicelayo. ISebe leZemali laseKZN liyanyanzeleka ukuba linike ingqwalasela kumalungelo noxanduva lwalo kuqala kwanolo lomntu wesithathu xa lisenza isigqibo sokuba likunike kusini na ulwazi olucelileyo.
- (3) Umceli uya kuyinikwa ingxelo egcinwe liSebe leZemali laseKZN xa kuhlangatyezwe nezi zinto ziyimfuneko zilandelayo obalulwe kuMthetho-
 - (a) umceli uthobeke zonke izinto eziyimfuneko yenkqubo enxulumene nesicelo sokufumana ingxelo ezibalulwe kuMthetho;
 - (b) kwanokuba ukufikelela kwingxelo/iingxelo eziceliweyo akukhatywa ngokwawo nawuphi na ummandla wokusikhaba isicelo njengoko kubalulwe kuMthetho.
- (4) ISebe leZemali laseKZN alinakuqwalasela ukuba ungubani na umceli okanye isizathu sokuba afune ulwazi olo xa lisenza isigqibo salo sokuvumela okanye

ukungamvumeli umceli ukuba alufumane ulwazi olo. ISebe leZemali lePhondo laseKZN liya kusenza isigqibo salo lijonge ukuba umceli unalo kusini na ilungelo lokufumana ulwazi olo.

- (5) Izizathu ezibekwe ngumceli zokufuna ukufikelela kulwazi azilichaphazeli tu ilungelo lomceli lokuba alufumane ulwazi olo alucelileyo ngokoMthetho. Kwakhona inkolelo yegosa lolwazi ethelekelela izizathu zokucela ukufikelela kulwazi komceli ayithathelwa ngqalelo xa kusenziwa isigqibo selungelo lomceli lokufikelela kulwazi ngokoMthetho.

17. Inkqubo yokucela

- (1) Umceli unako ukunikwa iingxelo ezigcinwe liSebe leZimali laseKZN xa ethobela ezi zinto ziyimfuneko zilandelayo-
- (a) Umceli uthobela zonke izinto eziyimfuneko ngokoMthetho kwinkqubo yokufumana ulwazi ukuze ayifumane ingxelo leyo ayicelileyo kwaye ukufikelela kuloo ngxelo kuxhomekeke kwimiqathango yoMthetho;
- (b) kufuneka umceli asebenzise ifomu eshicilelwe kwi*Gazethi kaRhulumente [iSaziso sikaRhulumente R187- 15 kweyoMdumba ngo-2002]* (iFomu A);
- (c) kufuneka umceli acacise ukuba ufuna ikopi yengxelo leyo ayicelayo okanye ufuna imvume yokuza kuyiphonononga ingxelo leyo. Kungenjalo xa ingxelo leyo ingelulo uxwebhu ingabukelwa ikwimo leyo ecelwe ngayo xa kunokwenzeka oko **[icandelo lama-29(2) loMthetho]**;
- (d) xa umceli ecela ukufumana ingxelo ikwimo ethile kufuneka ayifumane ingxelo leyo ikwimo leyo ayifuna ngayo ngaphandle kokuba ukwenza njalo kuya kuphazamisana ngamandla nokusebenza kwesebe okanye konakalise ingxelo leyo, okanye kuphazamise ilungelo lobunini elingelilo elikarhulumente. Xa ingxelo ingenakufumaneka ngemo ecelwa ikuyo ngenxa yezizathu ezithile ezibambekayo kodwa inokufumaneka ikwenye imo umrhumo ohlawulwayo uya kubalwa ngokungqinelana nalowo wemo ebicelwe ikuyo ingxelo leyo kuqala **[icandelo lama-29(3) nelesi-(4) loMthetho]**;
- (e) ukuba ngaba umceli ufuna ukwaziswa ngempendulo yesicelo sakhe ngenye indlela engaphaya kwempendulo yembalelwano, umz. ngomnxeba, kufuneka akuxele oko **[icandelo le-18(2)(e) loMthetho]**;
- (f) xa umceli ecela ingxelo egameni lomnye umntu kufuneka asixele isikhundla asenza phantsi kwaso isicelo eso **[icandelo le-18(2)(f) loMthetho]**;kwaye

- (g) xa umceli engakwazi ukubhala okanye ukufunda okanye enesiphene emzimbeni unokusenza ngomlomo isicelo sakhe. Kufuneka igosa lolwazi limzalisele ifomu umceli lowo lize limnike ikopi yayo **[icandelo le-18(3) loMthetho]**.
- (2) Imirhumo echazwe ngokwecandelo lama-22 loMthetho iziindidi ezimbini, umrhumo wokucela nomrhumo wokufikelela kwingxelo.
 - (3) Umceli ofuna ukufikelela kwingxelo eneenkcukacha zakhe buqu akanguye umceli weenkcukacha zomntu buqu ngoko ke kufuneka ahlawule umrhumo ofunekayo.
 - (4) Igosa lolwazi kufuneka likhuphele umceli isaziso (ingenguye umntu ocela iinkcukacha ezingomntu buqu) esixela ukuba umceli kufuneka ahlawule umrhumo omiselweyo (xa ufuneka) ngaphambi kokuba sisatyelwe isicelo sakhe.
 - (5) umrhumo wokucela uzii-R35-00. Eminye imirhumo iboniswa apha ngezantsi kumhlathi we-15. Umceli unako ukufaka isibheni apho kufanelekileyo okanye afake isicelo enkundleni esiphikisana nethenda okanye nokuhlawula umrhumo wokucela.
 - (6) Lisakuba igosa lolwazi lisenzile isigqibo ngesicelo elisifumeneyo kufuneka lazise umceli ngesigqibo eso ngendlela umceli afuna ukwaziswa ngayo.
 - (7) Xa isicelo sivunyiwe kufuneka umceli ahlawule umrhumo wokufumana ingxelo omiselwe ukuphanda, ukulungisa, ukuvelisa kwakhona kwakunye nokuyiposa ingxelo leyo xa kufanelekile aphinde ahlawulele ixesha eligqitha ngaphaya kwiiyure ezimbini ezimisiweyo zokuphanda nokulungisa ingxelo ukuze ibhengezwe.

18. Iinkonzo ezifumaneka kumalungu oluntu njengoko kucamngcwe kwicandelo le-14

(1) (f) loMthetho

- (1) ISebe leZimali laseKZN linoxanduva lokwenza imisebenzi ebalulwe kumhlathi wesi-2 wale Manuwali.
- (2) Kwiinkonzo ezingqamene noluntu ngqo eli Sebe libandakanyeka kuphela kulawulo nocwangciso lwemisebenzi kodwa alizizisi ngqo iinkonzo kuluntu.

19. Imirhumo emiselwe ngokuyalela kweSahluko se-11 seSaziso se-187 seGazethi kaRhulumente yomhla we-15 kweyoMdumba ngo-2002

(1) umrhumo wekopi yemanuwali njengoko kubalulwe kummiselo wesi-5(c) zii-R0.60 ikopi nganye ebukhulu bephepha buyi-A4 okanye inxalenye yalo.

(2) Imirhumo yokuelisa kwakhona ekujoliswe kuyo kummiselo wesi-7 (1) yile ilandelayo-

INKCAZELO	UMRHUMO
	R
(a) ikopi nganye efotokopiweyo yephepha elibubukhulu buyi-A4 okanye inxalenye yayo	0-60
(b) ikopi nganye eprintiweyo yephepha elibukhulu buyi-A4 okanye inxalenye yayo egcinwe kwikhompyutha okanye ekwimo efundeka ngekhompyutha	0-40
(c) ikopi ekwimo efundeka ngekhompyutha ekwidiski yekompakthi	40-00
(d) (i) ukhuphelo lwemifanekiso ebukelwayo ekwiphepha elibukhulu buyi-A4 okanye inxalenye yalo	22-00
(ii) ikopi yemifanekiso	60-00
(e) (i) ukhuphelo lwengxelo ephulaphulwayo ekwiphepha elibukhulu buyi-A4 okanye inxalenye yalo	12-00 17-00
(ii) ikopi yengxelo ephulaphulwayo	

3) Umrhumo ohlawulwa ngumceli ngamnye ongenguye umntu ocela iinkcukacha zomntu buqu ekujoliswa kuwo ngummiselo wesi-7(2) ngama-R35-00.

(4) Imirhumo ehlawulwa ngumceli ekujoliswa kuyo kummiselo wesi-7(3) yile ilandelayo-

INKCAZELO	UMRHUMO
	R
(a) ikopi nganye efotokopiweyo ekwiphepha elibukhulu buyi-A4 okanye inxalenye yayo	0-60
(b) ikopi nganye eprintiweyo ekwiphepha elibukhulu buyi-A4 okanye inxalenye yalo egcinwe kwikhompyutha okanye ekwimo ekufundeka ngekhompyutha	0-40

(c) ikopi ekwimo efundeka ngekhompyutha- (i) ekwidiski yestiffy (ii) ekwidiski yekompakthi	5-00 40-00
(d) (i) ukhuphelo lwemifanekiso ebukelwayo olukwiphepha elibukhulu buyi-A4 okanye inxalenye yalo (ii) ikopi yemifanekiso ebukelwayo	22.-0 60.00
(e) (i) ukhuphelo lwengxelo ephulaphulwayo kwiphepha elibukhulu buyi-A4 okanye inxalenye yalo (ii) ikopi yengxelo ephulaphulwayo	12-00 17-00
(f) Ukuphanda nokulungisa ingxelo ukuze ibhengezwe zii-R15 -00 iyure nganye okanye inxalenye yeyure ngaphandle kweyure yokuqala ekulixesha elifunekayo ukuphanda nokulungisa ingxelo.	

(5) Ukuze kufezekiswe iinjongo zokuthobela icandelo lama-22(2) loMthetho kufuneka kulandelwe ezi zinto zilandelayo –

(a) kufuneka kugqithe iiyure ezintandathu ngaphambi kokuba kuhlalulwe idiphozithi; kwaye

(b) isinye sesithathu somrhumo wokufikelela kulwazi sihlalulwa ngumceli njengediphozithi.

(6) lindleko zeposi ziya kuhlalulwa xa ikopi leyo iceliweyo kufuneka ithunyelwe kumceli ngeposi.

IFOMU A

ISICELO SOKUFUMANA INGXELO YEZIKO LIKARHULUMENTE

(Icandelo le-18(1) loMthetho oKhuthaza ukuFikelela kuLwazi, 2000

(uMthetho ongunombolo wesi-2 ka-2000)

[uMmiselo wesi-6]

YEYOKUSETYENZISWA LISEBE

Inombolo yesalathisi:

Isicelo sifunyenwe ngu... igama nefani yeGosa loLwazi/iSekela leGosa loLwazi

(umhla)(indawo)

Umrhumo wokucela (xa ufuneka): R.....

Idiphozithi (xa ifuneka): R

Umrhumo wokufikelela kwingxelo: R.....

.....Isandla seGosa loLwazi/iSekela leGosa
loLwazi

A linkcukacha zeziko likarhulumente

I Gosa loLwazi/iSekela leGosa loLwazi:

B linkcukacha zomntu ofaka isicelo sokufikelela kwingxelo

(a) *linkcukacha zomntu ofaka isicelo sokufikelela kwingxelo kufuneka zibhalwe apha ngezantsi.*

(b) *Kufuneka kubhalwe idilesi kunye/okanye nenombolo yefeksi yeRiphabliki ekufuneka ithunyelwe kuyo ingxelo.*

(c) *Xa kufuneka ubungqina besikhundla esenziwa phantsi kwaso isicelo eso kufuneka buncanyatheliswe apha.*

Amagama apheleleyo nefani:

Inombolo yesazisi:

Idilesi yeposi:

Inombolo yefeksi:

Inombolo yomnxeba:

Idilesi ye-imeyili:

Isikhundla esenziwa phantsi kwaso isicelo xa sisenziwa egameni lomnye umntu:

C. Iinkcukacha zomntu esenziwa egameni lakhe isicelo

Eli candelo kufuneka lizaliswe KUPHELA xa isicelo sokufikelela kulwazi sisenziwa egameni lomnye umntu.

Amagama apheleleyo nefani:

Inombolo yesazisi:

Iinkcukacha zengxelo

(a) *Nika iinkcukacha ezipheleleyo zengxelo ofaka isicelo sokufikelela kuyo kuquka nenombolo yesalathisi xa uyazi ukuze ibe nokufumaneka ingxelo leyo.*

(b) *Xa isithuba esilapha singoneli uyacelwa ukuba ubhale kwelinye iphepha uze ulincamathelise apha kule fomu.*

Kufuneka umceli awatyikitye onke amaphepha ongezelelweyo.

1. Inkcazelo yengxelo okanye inxalenye enxulumene nengxelo:
2. Inombolo yesalathisi, xa ikho:
3. Naziphi na ezinye iinkcukacha zengxelo:

D. Imirhumo

- (a) *Isicelo sokufikelela kwingxelo kungeyiyo ingxelo equlethe iinkcukacha zomntu buqu siya kusatyelwa kuphela emva kokuba uhlawulwe umrhumo wokucela.*
- (b) *Uya kwaziswa ngobungakanani bomrhumo okufuneka uwuhlawule njengomrhumo wokucela.*
- (c) *Umrhumo ohlawulwa njengomrhumo wokufikelela kwingxelo uxhomekeke kwimo efuneka ngayo ingxelo leyo kwakunye nexesha elifunekayo lokuyiphanda nokuyilungisa.*
- (d) *Xa ungahlawuliswa nawuphi na umrhumo nceda ubhale isizathu sokungahlawuliswa kwakho.*

Isizathu sokungayihlawuliswa imirhumo:

E. Imo efumaneka ngayo ingxelo

Xa unesiphene emzimbeni esibangela ungakwazi ukufunda, ukubukela okanye ukuphulaphula ingxelo ikwimo efikeleleka ngayo ebalulwe kwinombolo yoku-1 ukusa kweyesi-4 apha ngezantsi nceda ubhale isiphene sakho uze uxele ukuba ufuna ukuyifumana ikuyiphi imo ingxelo leyo uyicelayo.

Isiphene:		Imo efuneka ngayo ingxelo	
Phawula ibhokisi efanelekileyo ngo-X			
AMANQAKU:			
(a) Ukuthotyelwa kwesicelo sakho sokufikelela kwingxelo ikwimo ethile kuya kuxhomekeka kwimo efumaneka ngayo ingxelo leyo.			
(b) Singakhatywa isicelo sokufikelela kwingxelo phantsi kweemeko ezithile. Xa kusenzeka oko uya kwaziswa ukuba uya kuyinikwa ingxelo ikwenye imo kusini na.			
(c) Umrhumo wokufikelela kwingxelo, xa ufuneka uya kuqingqwa ngokwemo ecelwa ikuyo ingxelo leyo.			
1. Xa ingxelo ikwimo ebhaliweyo okanye eprintiweyo:			
	Ikopi yengxelo*		ukuhlola ingxelo
2. Xa ingxelo inemifanekiso ebukelwayo -			
(oku kuquka iifoto, izilayidi, ushicilelo lwevidiyo, imifanekiso eyenziwe ngekhompyutha, imizobo, njl njl:			
	ukubukela imifanekiso	ikopi yemifanekiso*	ukhuphelo lwemifanekiso*
3. Xa ingxelo inamagama ashicilelweyo okanye ulwazi olunokoveliswa kwakhona lwenziwe izandi:			
	ukuphulaphula isandi (ikhasethi)		ukhuphelo lwesandi* uxwebhu olubhaliweyo okanye oluprintiweyo)
4. Xa ingxelo igcinwe kwikhompyutha okanye ikwimo efundeka ngekhompyutha			

ikopi eprintiweyo yengxelo'	Ikopi eprintiweyo yeenkcukacha ezithatyathwe kwingxelo*	Ikopi ekwimo efundeka ngekhompyutha* (idiski yestiffy okanye eyekompakthi)
<p>Ukuba ngaba ucele ikopi okanye ukhuphelo lwengxelo (ngasentla) ingaba ufuna ikopi leyo okanye ukhuphelo olo luthunyelwe kuwe ngeposi?</p> <p>Uya kuhlawula iindleko zeposi.</p>		
<p>Qaphela ukuba xa ingxelo ingafumaneki ngolwimi oyifuna ngalo unako <i>ukuyinikwa</i> ngolwimi efumaneka ngalo.</p>		
<p>Ingaba uyifuna ngaluphi ulwimi ingxelo?</p>		

Isaziso sesigqibo esinxulumene nesicelo sokufikelela kwingxelo

Uya kwaziswa ukuba isicelo sakho sivunyiwe okanye sikhathiwe kusini na. Xa ufuna ukwaziswa ngenye indlela nceda uyichaze indlela leyo uze ubhale neenkukacha zayo ukuze sithotyelwe isicelo sakho sokwaziswa ngaloo ndlela.

Ufuna ukwaziswa njani ngesigqibo sesicelo sakho sokufikelela kwingxelo?

Ityikityelwe eumhla.....inyanga.....20

ISANDLA SOMCELI/ UMNTU ESIFAKWE EGAMENI LAKHE ISICELO

IFOMU B

ISAZISO SESIBHENO SANGAPHAKATHI

(ICandelo lama-75 loMthetho oKhuthaza ukuFikelela kuLwazi 2000 (*uMthetho onguNombolo wesi-2 ka-2000*))

[UMmiselo wesi- 8]

BHALA INOMBOLO YESALATHISI:

- A. linkcukacha zeziko likarhulumente
IGosa loLwazi/iSekela leGosa loLwazi:
- B. linkcukacha zomceli/umntu wesithathu ofaka isibheno sangaphakathi
- (a) *linkcukacha zomntu ofaka isibheno sangaphakathi mazibhalwe apha ngezantsi.*
- (b) *Kufuneka buncanyatheliswe apha ubungqina besikhundla esifakwa phantsi kwaso isibheno sangaphakathi, xa bufuneka.*
- (c) *Xa umntu ofaka isibheno ingumntu wesithathu kwaye ingenguye umntu owayecele ukufikelela kulwazi ekuqaleni, kufuneka kubhalwe iinkcukacha zomceli kwiFomu C elapha ngezantsi.*

Amagama apheleleyo nefani:

Inombolo yesazisi:

Idilesi yeposi:

Inombolo yefeksi:

Inombolo yomnxeba:

Idilesi ye-imeyili:

Isikhundla esifakwa phantsi kwaso isibheno sangaphakathi sifakwa egameni lomnye umntu:

C. Iinkcukacha zomceli

Eli candelo kufuneka lizaliswe KUPHELA xa umntu wesithathu (ingenguye umceli) efaka isibheni sangaphakathi.

Amagama apheleleyo nefani:

Inombolo yesazisi:

Isigqibo esingunobangela wokufakwa kwesibheni sangaphakathi

<i>Phawula ibhokisi efanelekileyo enesigqibo esingunobangela wokufakwa kwesibheni sangaphakathi ngo-X:</i>	
	Ukukhatywa kwesicelo sokufumana ingxelo
	Isigqibo esayamene nemirhumo emiselwe ngokwecandelo lama-22 loMthetho

	Isigqibo esayamene nokwandiswa kwexesha lokusatyelwa kwesicelo
	Isigqibo ngokwecandelo lama-29(3) loMthetho sokusikhaba isicelo sokufumana ingxelo ikwimo ecelwe ngayo
	Isigqibo sokusivuma isicelo sokufikelela kwingxelo

E. Izizathu zokubhena

Ukuba ngaba isithuba esinikiweyo apha asonelanga, uyacelwa ukuba ubhale kwelinye iphepha uze ulincamathelise kule fomu. Kufuneka uwatyikitye onke amaphepha ongezelelweyo.

Bhala izizathu ezingunobangela wesibheni sangaphakathi:

Bhala naziphi na ezinye iinkcukacha ezifanelekileyo kucamngco lwesibheni:

F. Isaziso sesigqibo sesibheni

Uya kwaziswa ngembalelwano ngesigqibo sesibheni sakho sangaphakathi. Xa ufuna ukwaziswa ngenye indlela uyacelwa ukuba uyichaze uze unike iinkcukacha zayo ezipheleleyo ezifanelekileyo khon'ukuze sikwazi ukuthotyelwa isicelo sakho sokwaziswa ngenye indlela.

Bhala indlela ofuna ukwaziswa ngayo:

linkcukacha zendlela ofuna ukwaziswa ngayo:

Ityikityelwe.....umhlainyanga 20

ISANDLA SOMNTU OFAKA ISIBHENO

YEYOKUSETYENZISWA LISEBE:

USHICILELO OLUSESIKWENI LWESIBHENO SANGAPHAKATHI

Isibheno sifunyenwe ngomhla
ngu (bhala isikhundla, igama nefani yeGosa loLwazi/iSekela leGosa loLwazi).

Isibheno sikhathshwa zizizathu zesigqibo seGosa loLwazi/iSekela leGosa loLwazi kunye neenkukacha zakhe nawuphi na umntu wesithathu enxulumene naye ingxelo, xa kufanelekile, sithunyelwe liGosa loLwazi/iSekela leGosa loLwazi ngomhla (umhla) kwigunya elifanelekileyo.

ISIPHUMO SESIBHENO:

ISIGQIBO SEGOSA LOLWAZI/SESEKELA LEGOSA LOLWAZI SIYAQINISEKISWA/KWENZIWA ISIGQIBO ESITSHA

ISIGQIBO ESITSHA:

.....UMHLA

IGUNYA ELIFANELEKILEYO

IFUNYENWE LIGOSA LOLWAZI/LISEKELA LEGOSA LOLWAZI IVELA KWIGUNYA ELIFANELEKILEYO NGOMHLA (umhla):

21. Uludwe lwenkqubo yokuthunywa kweSekela leGosa loLwazi liGosa loLwazi

Uludwe lwenkqubo olulandelayo lucacisa ngeenkukacha zokuthunywa kweSekela leGosa loLwazi liGosa loLwazi.

ULUDWE LWENKQUBO

Isiqe ndu	Icandelo loMthetho	Inkcazelo yamandla	Amandla alele	Igunya lokuthuma	Kuthunywa	Imiqathango
1.	14(1)	Ukuqulunqa imanuwali equlethe iinkcukacha ezibalulwe kwicandelo le-14(1)(a) ukuya ku- (i)	kwiNtloko yeSebe	Icandelo le-17 (3)	iSekela leGosa loLwazi	Umthunywa kufuneka ahlaziye kwaye apapashe imanuwali kwisithuba esinganeno konyaka, xa oko kuyimfuneko.
2.	15(1)	Ukungenisa kuMphathiswa wezoBulungisa inkcazelo yamacandelo eengxelo ezifumanekayo kwanendlela yokufikelela kwezo ngxelo.	kwiNtloko yeSebe	Icandelo le-17 (3)	iSekela leGosa loLwazi	Kufanele yenziwe kanye ngonyaka.
3.	32	Ukungenisa qho ngonyaka ingxelo echaza iinkcukacha ezicamngcwe kwicandelo lama-32 kwiKomishoni yaMalungelo oLuntu	kwiNtloko yeSebe	Icandelo le-17 (3)	iSekela leGosa loLwazi	
4.	15(4)	Ukuthunywa kwayo nayiphi na inxenyengxelo ecamngcwe kwicandelo le-15(1) enokuthi xa kufakwa isicelo sokufikelela kuyo sikhatywe	kwiNtloko yeSebe	Icandelo le-17 (3)	iSekela leGosa loLwazi	

		ngokweSahluko sesi-4 (amacandelo 33-46)				
5.	18(3)(b)	Ukunciphisa ukufakwa kwezicelo ngomlomo zibe zezibhaliweyo aze umceli anikwe ikopi yesicelo sakhe.	kwiNtloko yeSebe	Icandelo le-17 (3)	iSekela leGosa loLwazi	
6.	19(1)(b)	Ukunikeza uncedo olufanelekileyo ukuze umceli akwazi ukuthobela icandelo le-18(1)	kwiNtloko yeSebe	Icandelo le-17 (3)	iSekela leGosa loLwazi	
7.	19(2)	(a) Ukwazisa umceli ngenjongo yokukhatywa kwesicelo sakhe kuze kubekwe nezizathu zokukhatywa oko kucamngcwayo kunye noncedo olufumanekayo. (b) Ukunika umceli ithuba lokufumana olo ncedo. (c) Ukunika umceli ulwazi oluzakuthi lumncede ekwenzeni isicelo ngendlela echanekileyo. (d) Ukunika umceli ithuba lokuba aqinisekise isicelo sakhe okanye asilungise ukuze athobele icandelo le-18(1)	kwiNtloko yeSebe	Icandelo le-17 (3)	iSekela leGosa loLwazi	
8.	19(4)	Xa kufanele ingxelo yenziwe ifikelele kwelinye iziko likarhulumente, ukunika uncedo olufanelekileyo ukwenzela ukuba	kwiNtloko yeSebe	Icandelo le-17 (3)	iSekela leGosa loLwazi	

		umntu asifake kwiziko likarhulumente elifanelekileyo isicelo sakhe okanye ukugqithisela isicelo kwigosa lolwazi leziko likarhulumente elifanelekileyo, nayiphi na kwezi eza kwenza ukuba isicelo sikhawuleze sisatyelwe.				
9.	20(1)(c) (1)	Ukugqithiselwa kwesicelo kwelinye iziko li karhulumente phantsi kweemeko ezibalulwe kwiCandelo lama-20(1)(a)-(c)	kwiNtloko yeSebe	Icandelo le-17 (3)	iSekela leGosa loLwazi	
10.	20(1)(c) (ii)	Ukuthumelela iGosa loLwazi lelinye iziko likarhulumente ingxelo okanye ikopi yengxelo.	kwiNtloko yeSebe	Icandelo le-17 (3)	iSekela leGosa loLwazi	
11.	20(2)	Ukugqithisela kwiGosa loLwazi leziko likarhulumente isicelo sengxelo eyayenzelwe lona okanye ekulilo elayifumana kuqala, ngokwendlela okwenzeke ngayo.	kwiNtloko yeSebe	Icandelo le-17 (3)	iSekela leGosa loLwazi	
12.	20(3)	Ukunika ingqalelo kwisicelo esigqithisiweyo ngokunga sifunyenwe ligosa lolwazi elisigqithisileyo.	kwiNtloko yeSebe	Icandelo le-17 (3)	iSekela leGosa loLwazi	
13.	20(5)	Ukwazisa umceli ngokugqithiswa kwesicelo, izizathu zokugqithiswa kwaso kunye nexesha emasisatyelwe ngalo isicelo sakhe.	kwiNtloko yeSebe	Icandelo le-17 (3)	iSekela leGosa loLwazi	
14.	21	Ukuthabatha	kwiNtloko	Icandelo le-	iSekela	

		amanyathelo afanelekileyo ukulondoloza ingxelo.	yeSebe	17 (3)	leGosa loLwazi	
15.	22(1)	Ukukhuphela umceli isaziso sokuhlawula umrhumo wokucela omiselweyo (xa uyimfuneko)	kwiNtloko yeSebe	Icandelo le-17 (3)	iSekela leGosa loLwazi	
16.	22(2)	Ukukhuphela umceli isaziso sokuhlawula inxalenye emiselweyo yomrhumo wokufikelela njengediphozithi ehlawulwa xa isicelo sokufikelela sivunywa.	kwiNtloko yeSebe	Icandelo le-17 (3)	iSekela leGosa loLwazi	
17.	22(4)	Ukubuyisela imali ehlawulwe ngumceli njengediphozithi xa sikhatywe isicelo sakhe sokufikelela kwingxelo.	kwiNtloko yeSebe	Icandelo le-17 (3)	iSekela leGosa loLwazi	
18.	22(5)	Ukuyibamba ingxelo de umceli ayihlawule yonke imirhumo efunekayo (xa iyimfuneko).	kwiNtloko yeSebe	Icandelo le-17 (3)	iSekela leGosa loLwazi	
19.	23(1)	Ukwazisa umceli ukuba akanako ukufikelela kwingxelo kuba ingafumaneki okanye ingekho kwayona.	kwiNtloko yeSebe	Icandelo le-17 (3)	iSekela leGosa loLwazi	
20.	24(1)	Ukurhoxisa ukufikelela kwingxelo ixesha elifanelekileyo phantsi kweemeko ezicamngcwe kwicandelo lama-24(1)(a)-(c)	kwiNtloko yeSebe	Icandelo le-17 (3)	iSekela leGosa loLwazi	
21.	24(2)	Ukwazisa umceli	kwiNtloko	Icandelo le-	iSekela	

		ukuba kunokwenzeka ukuba afuneke enze iinkcazelo kwaye aziswe nexesha eliza kuthatyathwa kukurhoxiswa kokufikelela kwingxelo.	yeSebe	17 (3)	leGosa loLwazi	
22.	24(3)	Ukuvunywa kwesicelo sokufikelela kwingxelo xa kukho izizathu ezivakalayo zokukholelwa ekubeni umceli uya kuba nomonakalo omkhulu xa kunokurhoxiswa ukufikelela kwakhe kwingxelo isithuba esibalulwe kwicandelo lama-24(2)(b)	kwiNtloko yeSebe	Icandelo le-17 (3)	iSekela leGosa loLwazi	
23.	25(1)(a)	Ukuthabatha isigqibo sokusivuma kusini na isicelo sokufikelela.	kwiNtloko yeSebe	Icandelo le-17 (3)	iSekela leGosa loLwazi	
24.	25(1)(b)	Ukwazisa umceli ngesigqibo kwaye xa kunokwenzeka aziswe ngesigqibo sawo nawuphi na ke omnye umba obuxelwe ngumceli.	kwiNtloko yeSebe	Icandelo le-17 (3)	iSekela leGosa loLwazi	
25.	26(1)	Ukwandisa ixesha eliziintsuku ezingama-30 ezimiselwe kwicandelo lama-25(1) kwisithuba esingagqithiyo kwiintsuku ezingama-	kwiNtloko yeSebe	Icandelo le-17 (3)	iSekela leGosa loLwazi	

		30 phantsi kweemeko ezicamngcwe kwicandelo lama-26(1)(a)-(e)				
26.	26(1)	Ukwaziswa komceli ngokwandiswa kwexesha.	kwiNtloko yeSebe	Icandelo le-17 (3)	iSekela leGosa loLwazi	
27.	30(1)	Ukuqhagamshelana negosa lezempilo elityunjwe ngumntu ofanelekileyo ngaphambi kokuba sivunywe isicelo sokufikelela kwingxelo ngokwecandelo lama-29.	kwiNtloko yeSebe	Icandelo le-17 (3)	iSekela leGosa loLwazi	
28.	30(3)(a)	Ukusivuma isicelo sokufikelela kwingxelo xa ebonisa ubungqina obaneleyo bokuba ukucetyiswa okanye izicwangciso ezilolo hlobo zikho ukuze zinciphise, zidambise okanye zithintele umonakalo kumntu ofanelekileyo.	kwiNtloko yeSebe	Icandelo le-17 (3)	iSekela leGosa loLwazi	
29.	34(1)	Ngokwecandelo lama-34(2), ukukhatywa kwesicelo sokufikelela kwingxelo xa ibhengeza iinkcukacha zomntu buqu ezimalunga nomntu wesithathu.	kwiNtloko yeSebe	Icandelo le-17 (3)	iSekela leGosa loLwazi	
30.	36(1)	Ngokwecandelo lama-36(2), ukukhatywa kwesicelo sokufikelela	kwiNtloko yeSebe	Icandelo le-17 (3)	iSekela leGosa loLwazi	

		kwingxelo xa ingxelo leyo iqulethe iinkcukacha ezicamngcwe kwisandelo lama-36(1)(a)-(c)				
31.	37(1)(a)	Ngokwecandelo lama-37(2), ukukhatywa kwesicelo sokufikelela kwingxelo xa ukubhengezwa kwengxelo kuyakubangela intshukumo yokudalulwa kwehlebo ngumntu wesithathu.	kwiNtloko yeSebe	Icandelo le-17 (3)	iSekela leGosa loLwazi	
32.	37(1)(b)	Ngokwecandelo lama-37(2), ukukhatywa kwesicelo xa ingxelo iqulethe iinkcukacha ezinikwe ngumntu wesithathu njengehlebo.	kwiNtloko yeSebe	Icandelo le-17 (3)	iSekela leGosa loLwazi	
33.	38(a)	Ukukhatywa kwesicelo xa ukubhengezwa kwengxelo kungabeka ubomi bomntu esichengeni okanye kumenze angakhuseleki.	kwiNtloko yeSebe	Icandelo le-17 (3)	iSekela leGosa loLwazi	
34.	38(b)	Ukukhatywa kwesicelo sokufikelela kwingxelo xa ukubhengezwa kwayo kunokubek'ibala elibi okanye kuphazamisane nezinto okanye imiba ecamngcwe kwicandelo lama-38(b)(i) (ii)	kwiNtloko yeSebe	Icandelo le-17 (3)	iSekela leGosa loLwazi	

35.	39(1)(b)	Ukukhatywa kwesicelo xa ukufikelela kuyo kuthintelwa ngokwecandelo lama- 60(14) loMthetho weNkqubo yoLwaphulo Mthetho, 1977	kwiNtloko yeSebe	Icandelo le-17 (3)	iSekela leGosa loLwazi	
36.	39(1)(b)	Ukukhatywa kwesicelo sokufikelela kwingxelo phantsi kweemeko ezicamngcwe kwicandelo lama-39(1)(b)	kwiNtloko yeSebe	Icandelo le-17 (3)	iSekela leGosa loLwazi	
37.	39(3)(a)	Ukwala ukuqinisekisa okanye ukukhanyela ubukho bengxelo phantsi kweemeko ezibalulwe kwicandelo lama-39(3)(a)	kwiNtloko yeSebe	Icandelo le-17 (3)	iSekela leGosa loLwazi	
38.	40	Ukuyala ingxelo xa isicelo sinelungelo elilodwa lokuveliswa kwiinkqubo zomthetho.	kwiNtloko yeSebe	Icandelo le-17 (3)	iSekela leGosa loLwazi	
39.	41(1)	Ukusikhaba isicelo sokufikelela kwingxelo xa ukubhengezwa kwayo kunokubek'ibala elibi kwimiba ecamngcwe kwicandelo lama-41(1)(b)	kwiNtloko yeSebe	Icandelo le-17 (3)	iSekela leGosa loLwazi	
40.	41(4)(a)	Ukwala ukuqinisekisa okanye ukukhanyela ubukho okanye ukungabikho kwengxelo phantsi kweemeko ezibalulwe kwicandelo lama-	kwiNtloko yeSebe	Icandelo le-17 (3)	iSekela leGosa loLwazi	

		41(4)(a)				
41.	42(1)	Ukukhatywa kwesicelo xa ukubhengezwa kwengxelo kunododobalisa umdla woqoqosho okanye ubume bezimali beRiphabliki okanye ukukwazi kukaRhulumente ukulawula uqoqosho lweRiphabliki.	kwiNtloko yeSebe	Icandelo le-17 (3)	iSekela leGosa loLwazi	
42.	42(3)	Ngokwecandelo lama-42(5),ukukhatywa kwesicelo sokufikelela kwingxelo phantsi kweemeko ezicamngcwe kwicandelo lama-42(3)	kwiNtloko yeSebe	Icandelo le-17 (3)	iSekela leGosa loLwazi	
43.	42(7)	Ukunika umceli inkcazelo ebhaliweyo yeendlela ezisetyenziswayo xa kusenziwa uvavanyo okanyo olunye uphando	kwiNtloko yeSebe	Icandelo le-17 (3)	iSekela leGosa loLwazi	
44.	43(1)	Ukukhatywa kwesicelo xa ingxelo ineenkcukacha zophando-nzulu olwenziwayo okanye oluza kwenzelwa umntu wesithathu ekunokuthi ukubhengezwa kwayo kubhentsisele kwisithintelo esililishwa umntu wesithathu, umntu owenza okanye oza kwenzela umntu wesithathu uphando-nzulu, okanye	kwiNtloko yeSebe	Icandelo le-17 (3)	iSekela leGosa loLwazi	

		umxholo wophando-nzulu.				
45.	43(2)	Ukukhatywa kwesicelo sokufikelela kwingxelo xa iqulethe iinkcukacha ngophando-nzulu olwenziwa okanye olwenzelwa iziko likarhulumente ezinokuthi xa zinokubhengezwa zibhentsisele kwisithintelo esililishwa iziko likarhulumente, umntu owenza okanye owenzela iziko likarhulumente uphando-nzulu, okanye umxholo wophando-nzulu.	kwiNtloko yeSebe	Icandelo le-17 (3)	iSekela leGosa loLwazi	
46.	44(1)	Ngokwecandelo lama-44(3)nelesi-(4), ukukhatywa kwesicelo sokufikelela kwingxelo xa ingxelo ineenkcukacha ezicamngcwe kwicandelo lama-44(1)(a)(i) no-(ii), okanye xa ukubhengezwa kwayo kunokuphazamisana nenkqubo yeengxoxo kwiziko likarhulumente okanye phakathi kwamaziko karhulumente okanye ukubhengeza ingxelo kunokuthi ngenxa yokubhengezwa ngaphambi kwethuba	kwiNtloko yeSebe	Icandelo le-17 (3)	iSekela leGosa loLwazi	

		kuphazamisane nempumelelo yomgaqo-nkqubo lowo.				
47.	44(2)	Ngokwecandelo lama-44(4), ukukhatywa kwesicelo phantsi kweemeko ezicamngcwe kwicandelo lama-44(2)(a)-(c)	kwiNtloko yeSebe	Icandelo le-17 (3)	iSekela leGosa loLwazi	
48.	45	Ukukhatywa kwesicelo xa siyimfeketho okanye sivus'umnyele okanye umsebenzi obandakanyekayo kusabelo lwesicelo eso uya kukhokelela ekuphambukeni kwezixhobo zeziko lilkarhulumente ngokungafanelekanga.	kwiNtloko yeSebe	Icandelo le-17 (3)	iSekela leGosa loLwazi	
49.	46	Ukuvunywa kwesicelo njengoko kucamngcwe kula macandelo elama-34(1), 36(1), 37(1)(a), okanye (b), 38(a) okanye (b), 39(1)(a) okanye (b), 40, 41(1)(a) okanye (b), 42(1) okanye (3), 43(1) okanye (2), 44(1) okanye (2) okanye elama-45 ukuba ubhengezo lwengxelo leyo luya kuveza ubungqina bokwaphulwa komthetho okumandla okanye ukusilela ukuthobela umthetho, okanye umdla omkhulu woluntu kubhengezo	kwiNtloko yeSebe	Icandelo le-17 (3)	iSekela leGosa loLwazi	

		lwengxelo ungaphaya komonakalo ocamngcwe kwigatya ekujoliswe kulo				
50.	47(1)	Ukuthabatha onke amanyathelo afanelekileyo ukwazisa umntu wesithathu onxulumene nengxelo leyo ngesicelo sokufikelela kuyo.	kwiNtloko yeSebe	Icandelo le-17 (3)	iSekela leGosa loLwazi	
51.	47(2)	Ukwazisa umntu wesithathu ngokwecandelo lama-47(1) ngokukhawuleza, kodwa xa kunokwenzeka kwisithuba seentsuku ezingama-21 emva kokufunyanwa okanye emva kokugqithiswa kwesicelo kwaye ngeyona ndlela ikhawulezayo ekhoyo.	kwiNtloko yeSebe	Icandelo le-17 (3)	iSekela leGosa loLwazi	
52.	47(3)	Xa usazisa umntu wesithathu ngokwecandelo lama-47(1), umnika iinkcukacha ezicamngcwe kwicandelo lama-47(3) (a)-(e).	kwiNtloko yeSebe	Icandelo le-17 (3)	iSekela leGosa loLwazi	
53.	47(4)	Ukunika umntu wesithathu isaziso esibhaliweyo esixela imiba ebalulwe kwicandelo lama-47(3) xa engaziswanga ngomlomo ngesicelo sokufikelela	kwiNtloko yeSebe	Icandelo le-17 (3)	iSekela leGosa loLwazi	

		kwingxelo.				
54.	49(1)(b)	Ukuthabatha isigqibo emva kokuqwalasela naziphi na iinkcazelo ezenziwe ngumntu wesithathu ngokwecandelo lama-48 sokuba siyavunywa kusini na isicelo sokufikelela kwingxelo.	kwiNtloko yeSebe	Icandelo le-17 (3)	iSekela leGosa loLwazi	
55.	49(1)(b)	Ukwazisa abantu besithathu ngesigqibo esicamngcwe kwicandelo lama-49(1)(a)	kwiNtloko yeSebe	Icandelo le-17 (3)	iSekela leGosa loLwazi	
56.	49(4)	Ukunika umceli imvume yokufikelela kwingxelo njengoko kucamngcwe kwicandelo lama-49(1) (a).	kwiNtloko yeSebe	Icandelo le-17 (3)	iSekela leGosa loLwazi	
57.	75(4)	Ukuthumelela igunya elifanelekileyo isibheno sangaphakathi kunye nezizathu zakhe zesigqibo eso sichaphazelekayo, kwaye xa isibheno sangaphakathi siphikisana nokukhatywa okanye ukuvunywa kwesicelo sokufikelela kwingxelo kufuneka iinkcukacha zakhe nawuphi na omnye umntu wesithathu ekufuneka aziswe ngesicelo ngokwecandelo lama-47(1).	kwiNtloko yeSebe	Icandelo le-17 (3)	iSekela leGosa loLwazi	

58.	77(6)(a)	Ukunika umceli imvume yokufikelela kwingxelo kwangoko xa igunya elifanelekileyo ligqibe kwisibheno sangaphathi ukuba lisivume isicelo sokufikelela kwingxelo kwaye isaziso esiya kumntu wesithathu asiyomfuneko ngokwecandelo lesi-7(4) (a) (ii).	kwiNtloko yeSebe	Icandelo le-17 (3)	iSekela leGosa loLwazi	
59.	77(6)(b)	Ukunika umceli imvume yokufikelela kwingxelo xa igunya elifanelekileyo ligqibe kwisibheno sangaphathi ukuba sisivume isicelo sokufikelela kwingxelo kwaye isaziso esiya kumntu wesithathu siyafuneka kwicandelo lama-77(4)(a)(ii), emva kokuba kuphele iintsuku ezingama-30 emva kokuba isaziso sinikwe umntu wesithathu ngamnye ochaphazelekayo.	kwiNtloko yeSebe	Icandelo le-17 (3)	iSekela leGosa loLwazi	
60.	82(b)	Ukuthabatha okanye ukuzikhwebula ekuthabatheni amanyathelo ngokwemiyalelo yeNkundla yamatyala.	kwiNtloko yeSebe	Icandelo le-17 (3)	iSekela leGosa loLwazi	